



the magnet

INSTALLATION GUIDE

WOOD

-exterpark & the magnet[®]

ARGUABLY BEST WOOD DECKING AVAILABLE
WITH TWO PATENTED INNOVATIONS



100% ACCESSIBLE DECK SCREWLESS INSTALLATION

The new Exterpark Magnet invisible profile
brings us MORE key advantages!

More solid | More wear Surface | More stable



More resistant | More durable



LOUVRE

Jean Nouvel and Exterpark create the new
magnet Louvre deck

New elegant formats in
50, 60, 70 and 80mm width.

Narrow boards with single magnet groove
and no increase in fixing elements

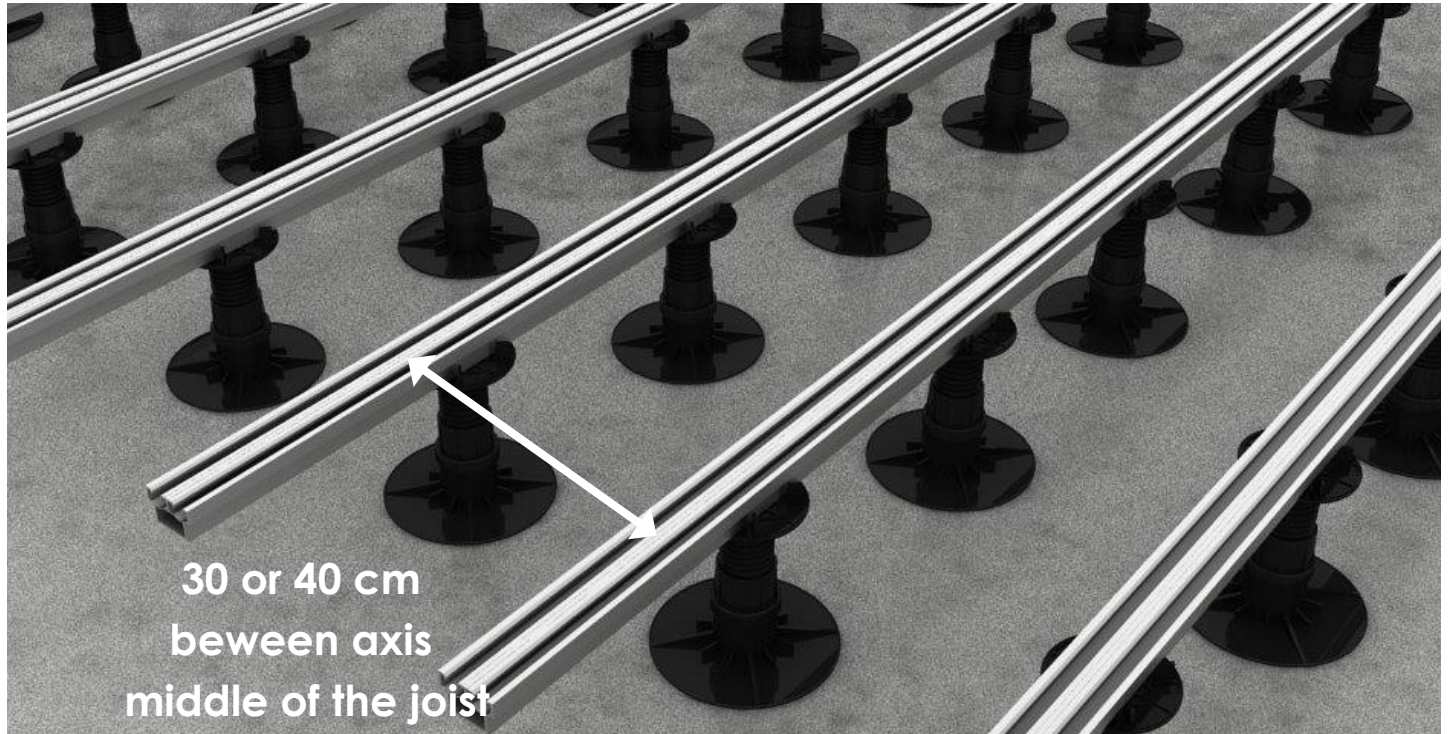
Improved stability

100% accessible

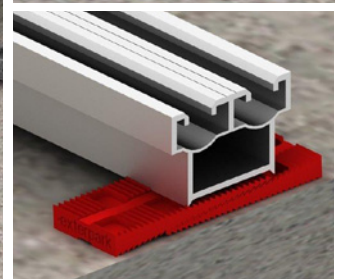
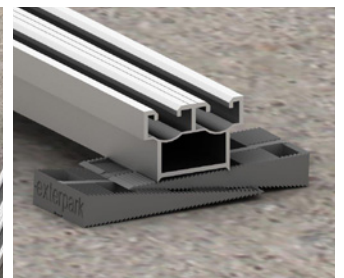
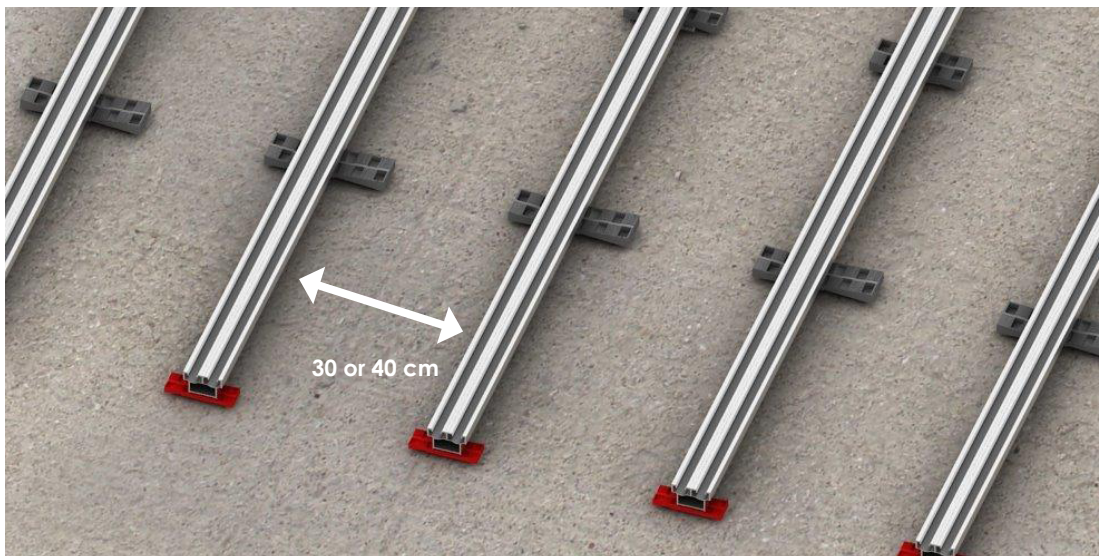


A) JOISTS

Joists are the foundation and structure of the future flooring. They must be expertly leveled and well distributed throughout the site. The leveling should be accurately done with height adjustable pedestals or wedges to match our aluminum joists.



Place joists every 30 cm or 40cm according to board lengths



ACCESSORIES PER SQM

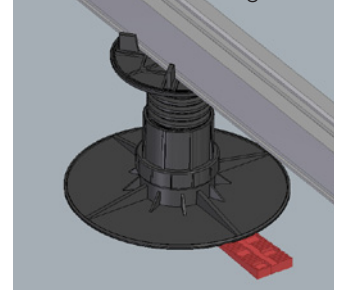
EXTERPARK PLUS MAGNET 20/21X95/100

DESCRIPTION	MULT. OF 30
MAGNET CLIPS ZIG-ZAG	59
SPACERS	10
BLOCKING SPACER	6
JOISTS	3.5
PEDESTALS	7

EXTERPARK PLUS MAGNET 20/21X95/100

DESCRIPTION	MULT. OF 40
CLIPS MAGNET	65 (Double)
SPACERS	13
BLOCKING SPACERS	3
JOISTS	3
PEDESTALS	6

Pedestals and Wedges may also be combined together



B) MAGNET CLIPS

The magnet system is **a mechanical locking with a perfect fitting of magnet clips inside the groove of the joists.**

If clips are not placed in the right position and are smashed against a flat surface, they will break. If on the contrary, clips are properly positioned, they can be clicked in and out as many times as desired.



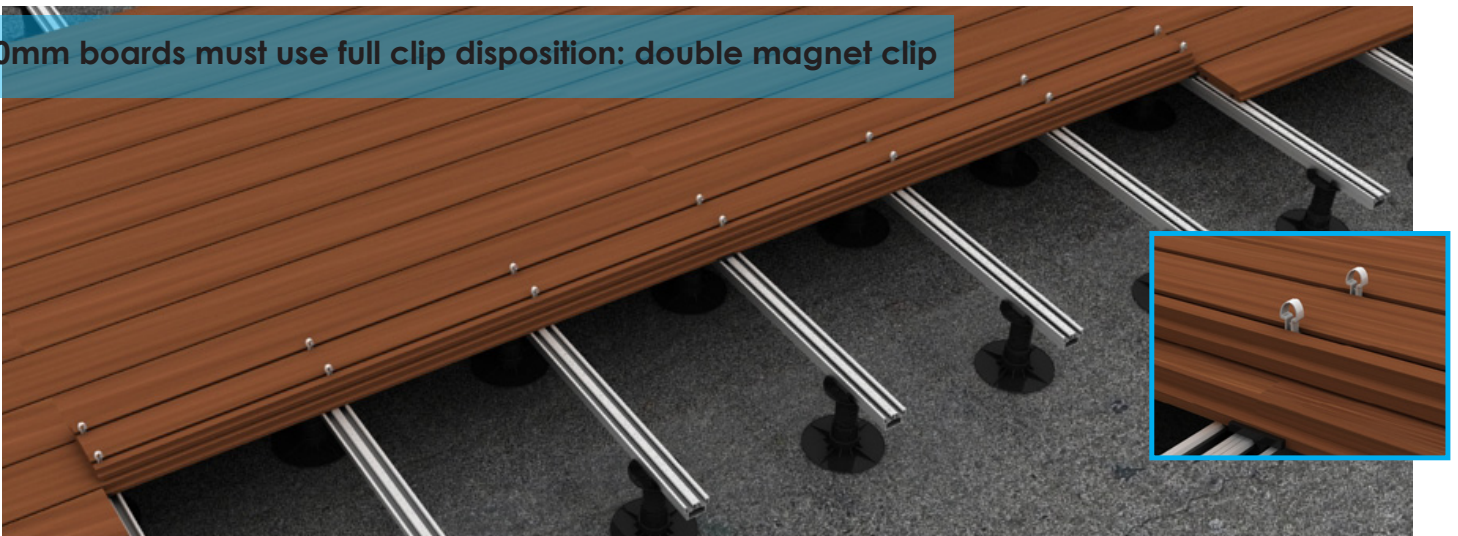
95mm width board can use zig zag disposition



a) When installing **Ipe and Teak both at size 21x95** and multiple of 30cm lengths we can use a **zig zag** positioning of magnet clips in the middle part of the board without compromising the stability of the deck construction, due to 3 factors: Not too large width of the boards, great stability of these two wood types and being joist spacing 30cm. Short ends will always use two magnet clips.

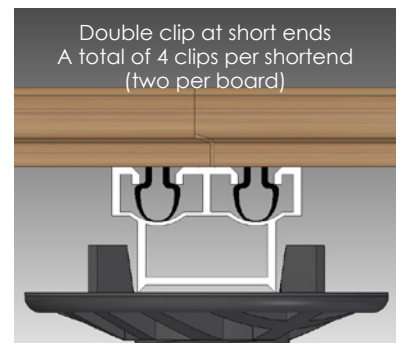
b) **Wider width than 100mm** and larger spacing of joists than 30cm must use **full clip disposition at all joists.**

120mm boards must use full clip disposition: double magnet clip

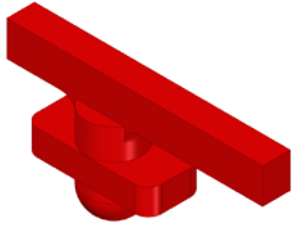


- a) Turn the board upside down on top of the joists.
- b) Align magnets according to joists spacing.
- c) Place magnets in the groove of the board.
- d) Twist magnet clips to block them in the desired position
- e) Turn board down and press smoothly.
A neat CLICK sound will be heard.

Double clip at short ends
A total of 4 clips per shortend
(two per board)

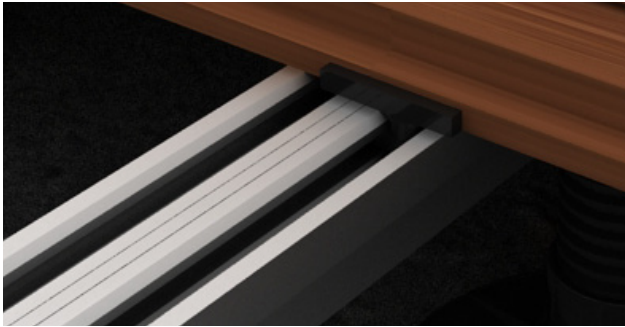


C) SPACERS

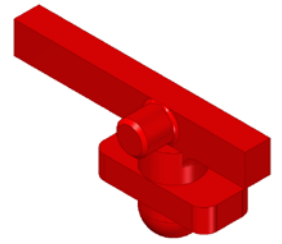


SPACERS their function on outdoor applications is to **provide a 4mm gap between boards** to allow for water drainage and air circulation.

SPACERS SHOULD BE PLACED IN EACH SIDE OF THE BOARD AT SHORTENDS/JOINTS.

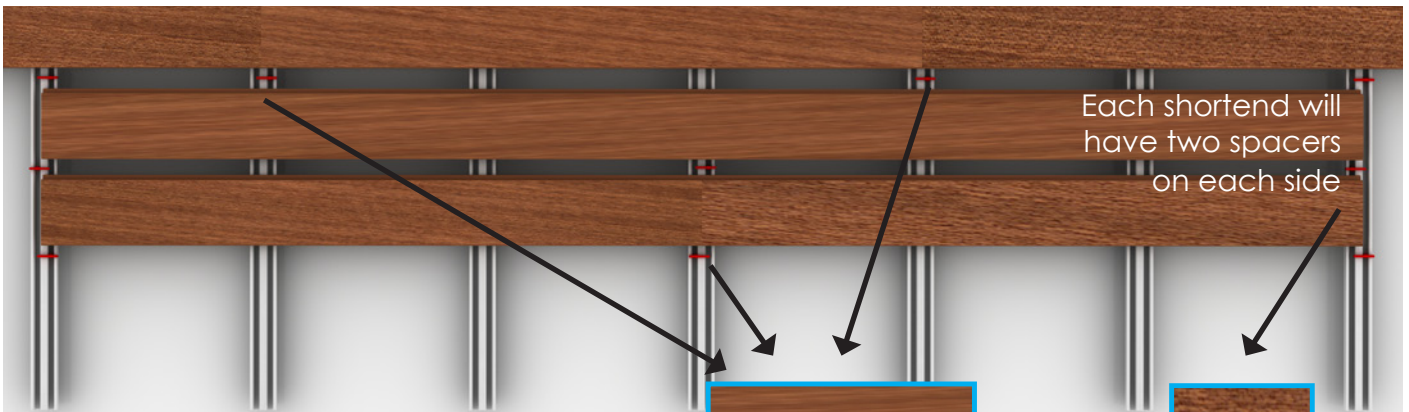
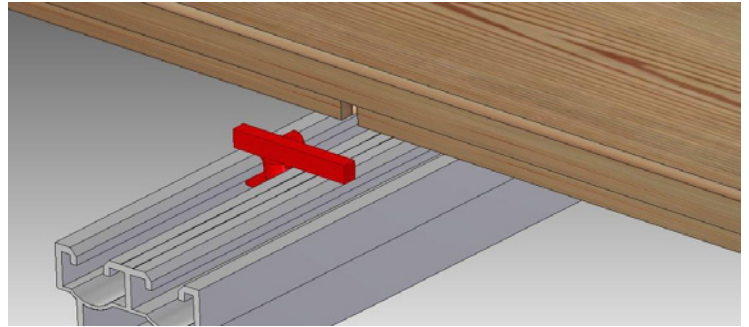


BLOCKING SPACERS provide a 4mm gap between boards **and at the same time block the boards** to avoid longitudinal moves mainly caused by mechanical tension.



LOCATION:

- a) First row of every installation line.
- b) During the installation at intervals of each 10 running meters.



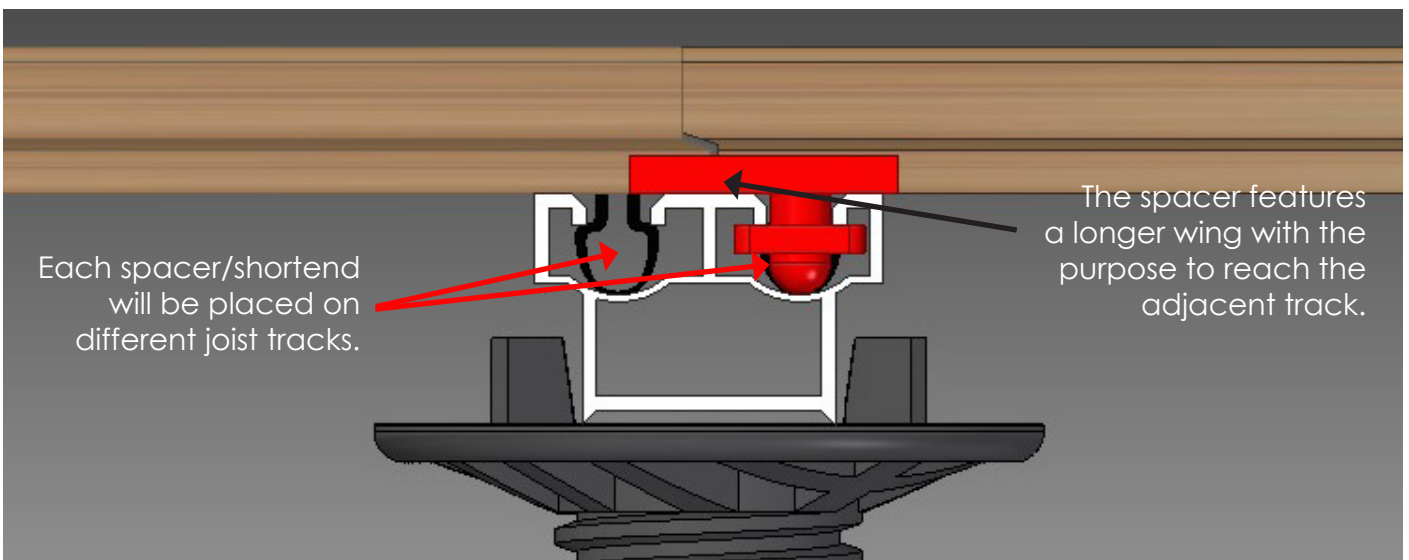
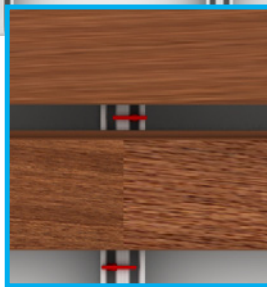
Each shortend will have two spacers on each side

NOTE:

If the board is 1500mm long or more place a spacer in the middle.

It is not necessary to put spacers at every joint.

This will increase the consumption of accessories and installation time with no extra benefit for the performance of the floor.

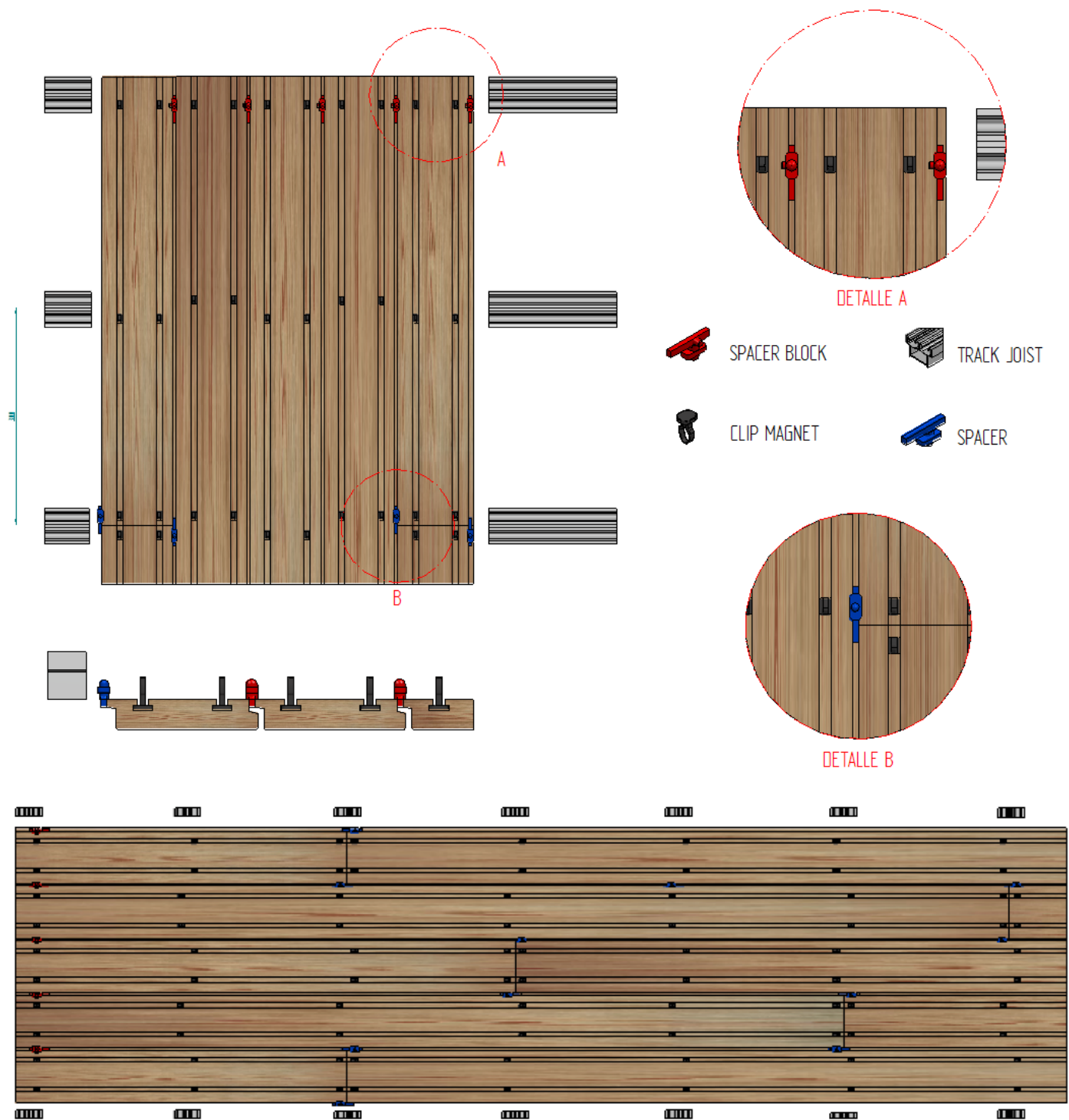


Each spacer/shortend will be placed on different joist tracks.

The spacer features a longer wing with the purpose to reach the adjacent track.

D) GENERAL FITTING ILLUSTRATION

The below sketches show a general view of a proper distribution of all necessary elements involved in a magnet installation



More instruments consumption scenarios:

EXTERPARK PLUS MAGNET 20/21X95/100

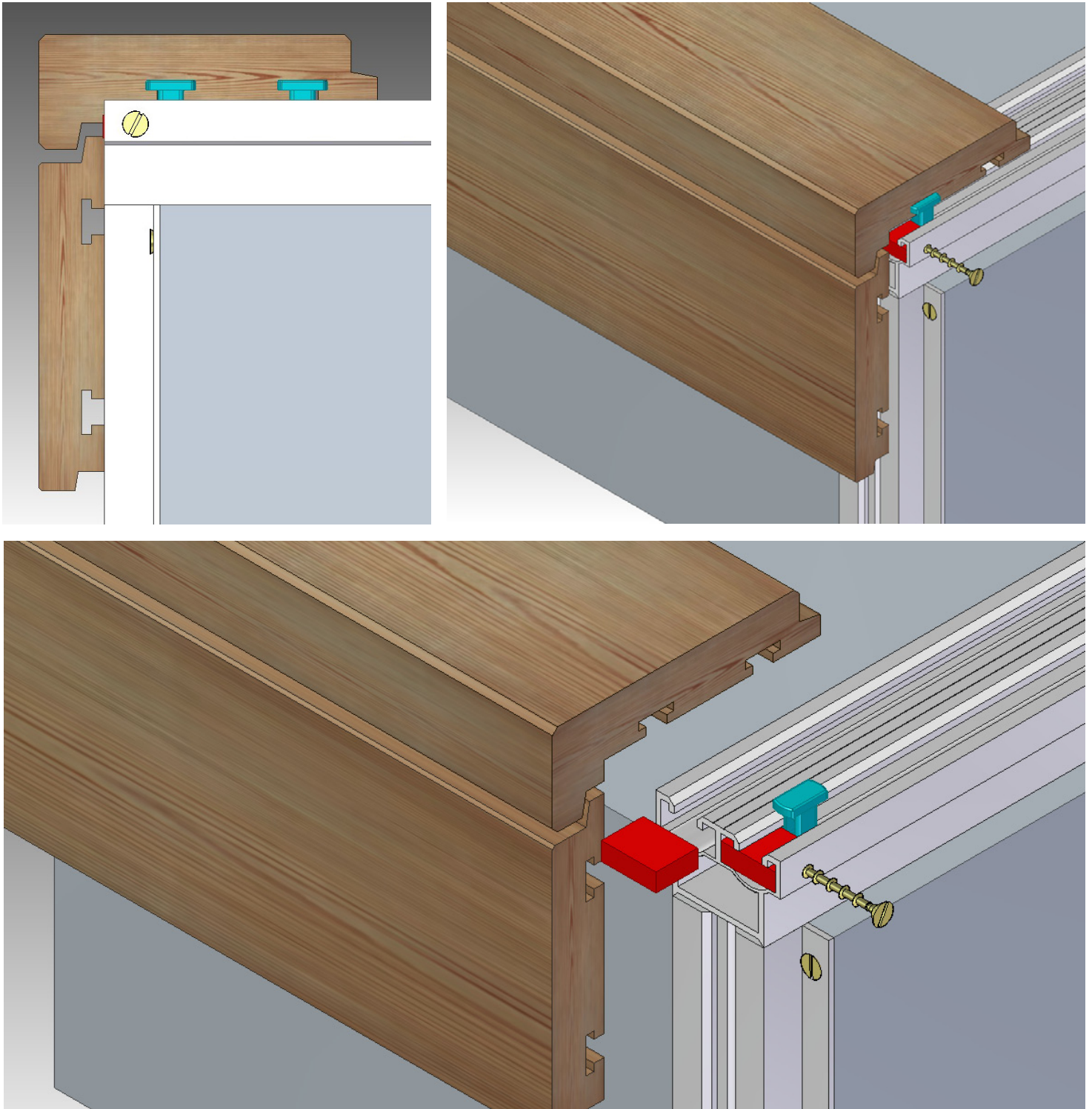
DESCRIPTION	MULT. OF 30
CLIPS MAGNET	80 (Double)
SPACERS	10
BLOCKING SPACER	6
JOISTS	3.5
PEDESTALS	7

EXTERPARK PLUS MAGNET 20/21X115/120

DESCRIPTION	MULT. OF 30
CLIPS MAGNET	65 (Double)
SPACERS	13
BLOCKING SPACERS	3
JOISTS	3.5
PEDESTALS	7

E) L-SHAPED BOARD

We have designed the magnet L-Shaped board to provide the best possible finishing in several common scenarios.



INSTALLATION & RECOMMENDATIONS

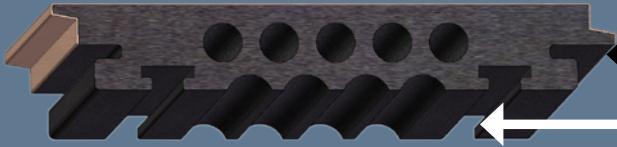
- A) If we will use a riser, we recommend to use wall joist as vertical support for the magnet riser board.
- B) In order to secure the L-Shape board and prevent it from sliding we must block the way out at the last part of the upper joist as it is shown in the drawings.
- C) We do that by inserting two blocks of any material and screwing from the side.
- D) Once that simple operation is done, magnet clips can be positioned on the L-Shape board and clip it on the aluminum joist.

WPC

-exterpark **TECH CUBE(3)**

22X145X2200MM

Tech Cube is the first combo WPC designed to fit SpeedClip and Magnet systems providing the following advantages:



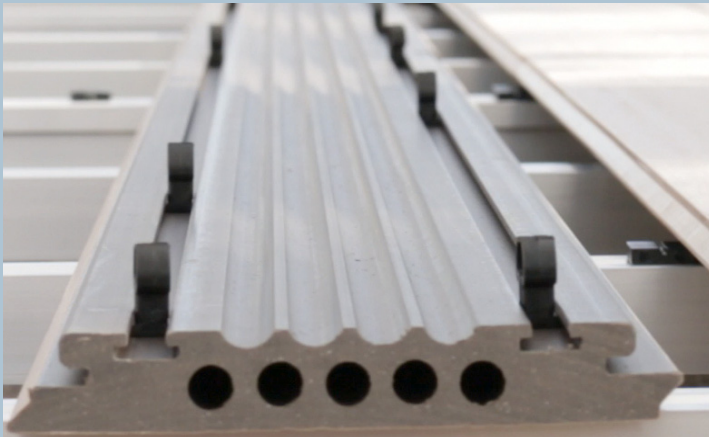
Screwdown clip &

Screwless patented SpeedClip

Accessible **Magnet Clip**



- Allows for combination of fitting systems in the same project
- Gain in installation speed with SpeedClip
- Improve it by making it accessible with the Magnet system



ASSEMBLY

easy No screws

fast No predrilling

silent No tools

COST-EFFICIENT

TOTAL ACCESSIBILITY

maintenance friendly

easy substitution of boards

enlarged service live

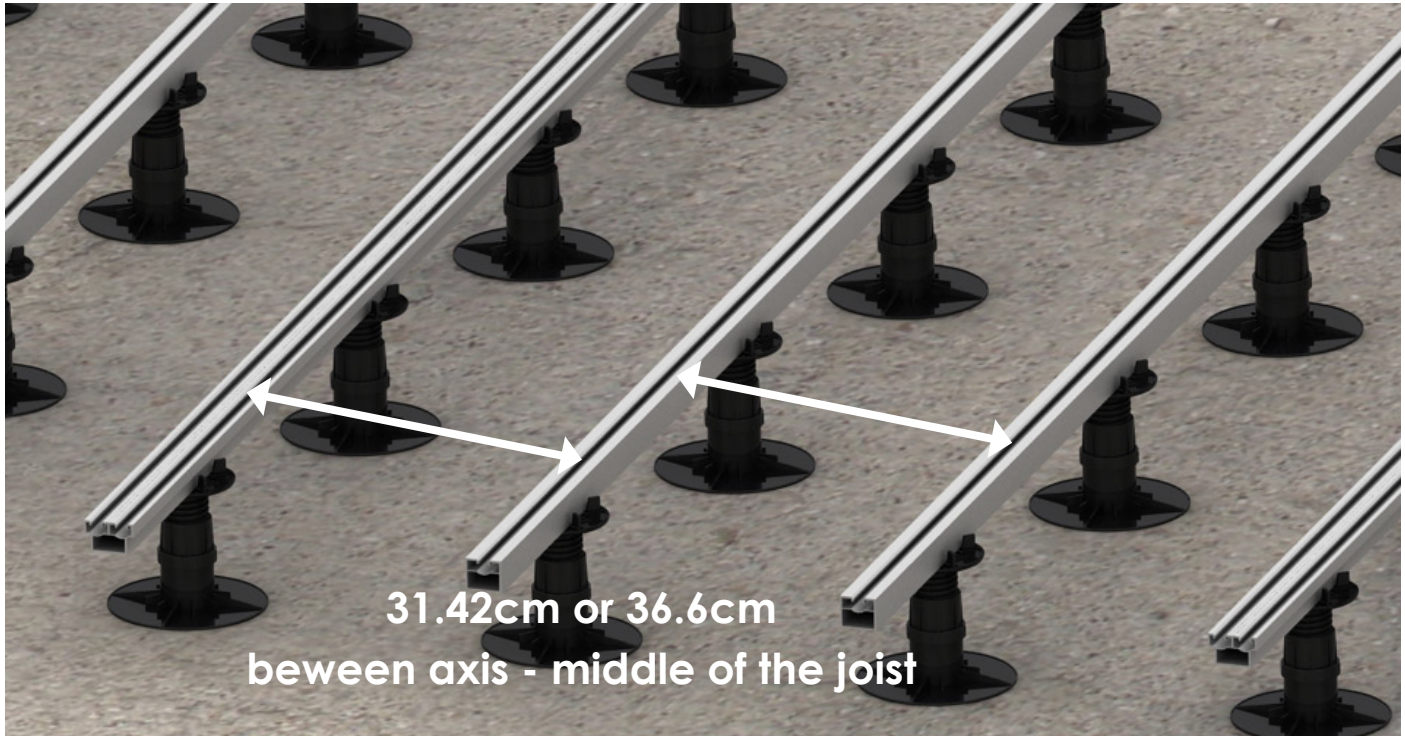
relocation possibilities

REUSABLE



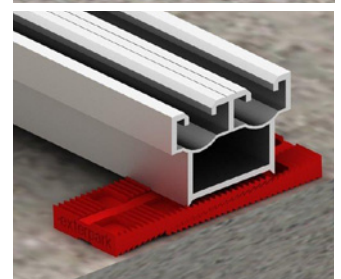
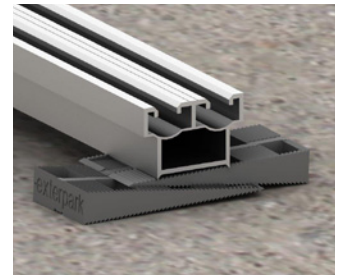
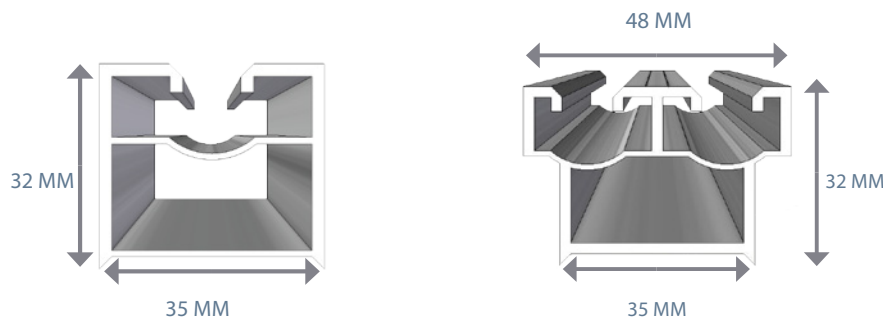
A) JOISTS

Joists are the foundation and structure of the future flooring. They must be expertly leveled and well distributed throughout the site. The leveling should be accurately done with height adjustable pedestals or wedges to match our aluminum joists.



Place joists every 31.42 or 36.6 cm according to pedestrian use

In exterpark tech wpc series, all boards are produced at fixed length of 2200mm. That will allow us to plan ahead where the short end of the boards will fall. therefore the ideal layout of joists will be combinations of 2 rows of single joist and 1 row of double track joist.



ACCESSORIES PER SQM

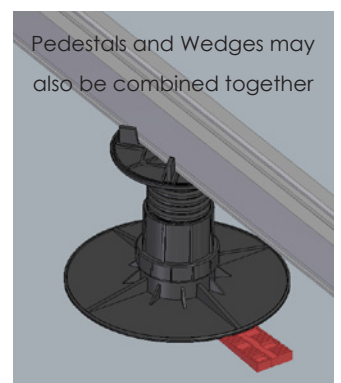
EXTERPARK TECH CUBE 22X145

DESCRIPTION	MULTIPLE OF 31.4
MAGNET CLIPS (ZIG-ZAG)	36
SPACERS	11
BLOCKING SPACERS	3.5
SIMPLE JOIST	2.5
DOUBLE JOIST	1
PEDESTALS	7

EXTERPARK TECH CUBE 22X145

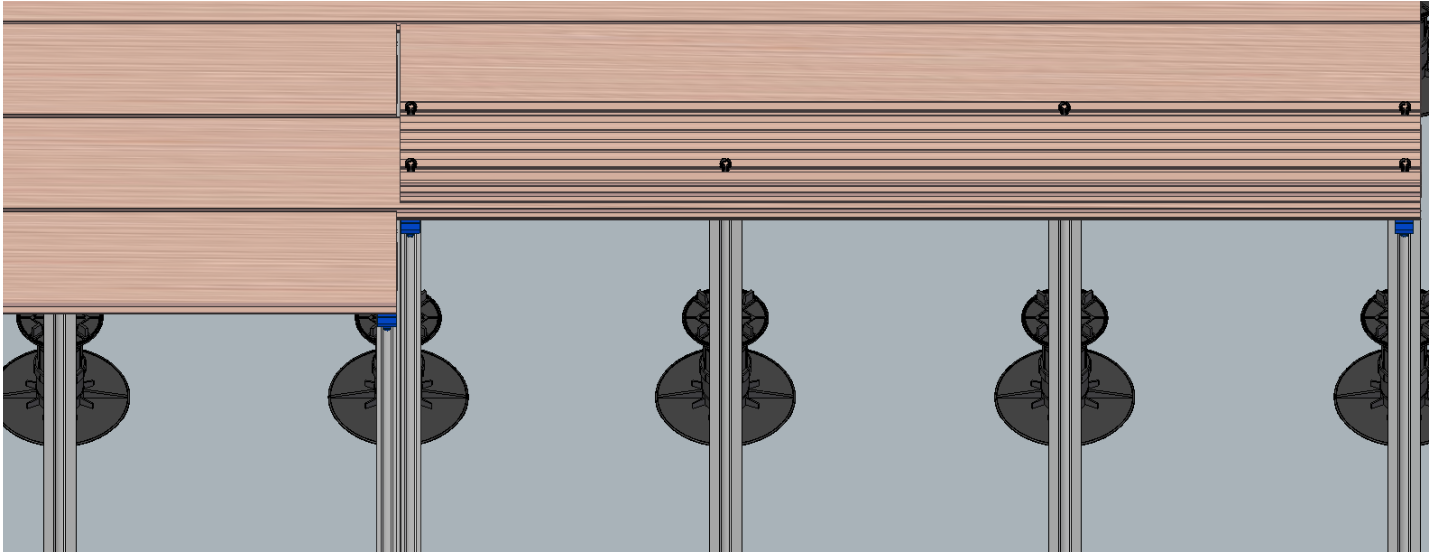
DESCRIPTION	MULTIPLE OF 36.6
MAGNET CLIPS (ZIG-ZAG)	34
SPACERS	11
BLOCKING SPACERS	3.5
SIMPLE JOIST	2
DOUBLE JOIST	1
PEDESTALS	6

Pedestals and Wedges may also be combined together



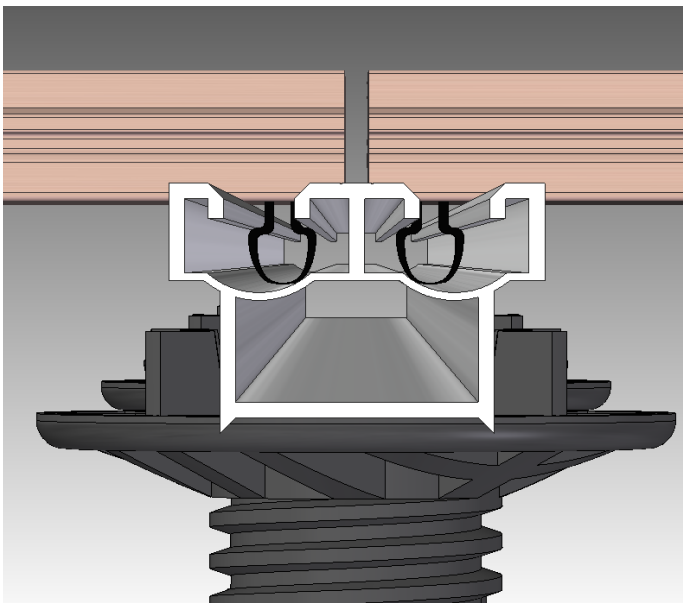
B) MAGNET CLIPS

The magnet system is **a mechanical locking with a perfect fitting of magnet clips inside the groove of the joists**. If clips are not placed in the right position and are smashed against a flat surface, they will break. If on the contrary, clips are properly positioned, they can be clicked in and out as many times as desired.



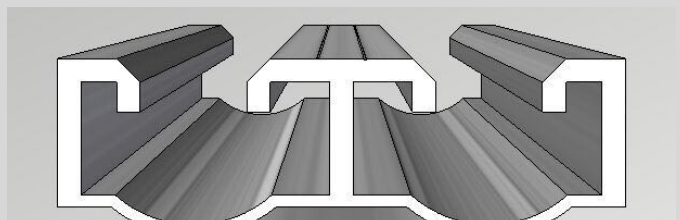
Exterpark TECH can use a zigzag disposition of magnet clips

- a) Turn the board upside down on top of the joists.
- b) Align magnets according to joists spacing.
- c) We recommend two magnet clips at both short ends and in the middle of the board, the rest in zig-zag (in zig-zag) installation.
- d) Twist magnet clips to block them in the required position to fit inside the track of the joist.
- e) Turn board down and press smoothly to click the magnet clips.

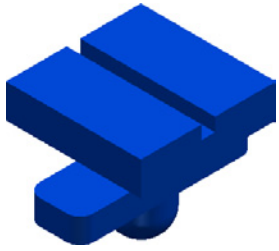


SHORT-ENDS

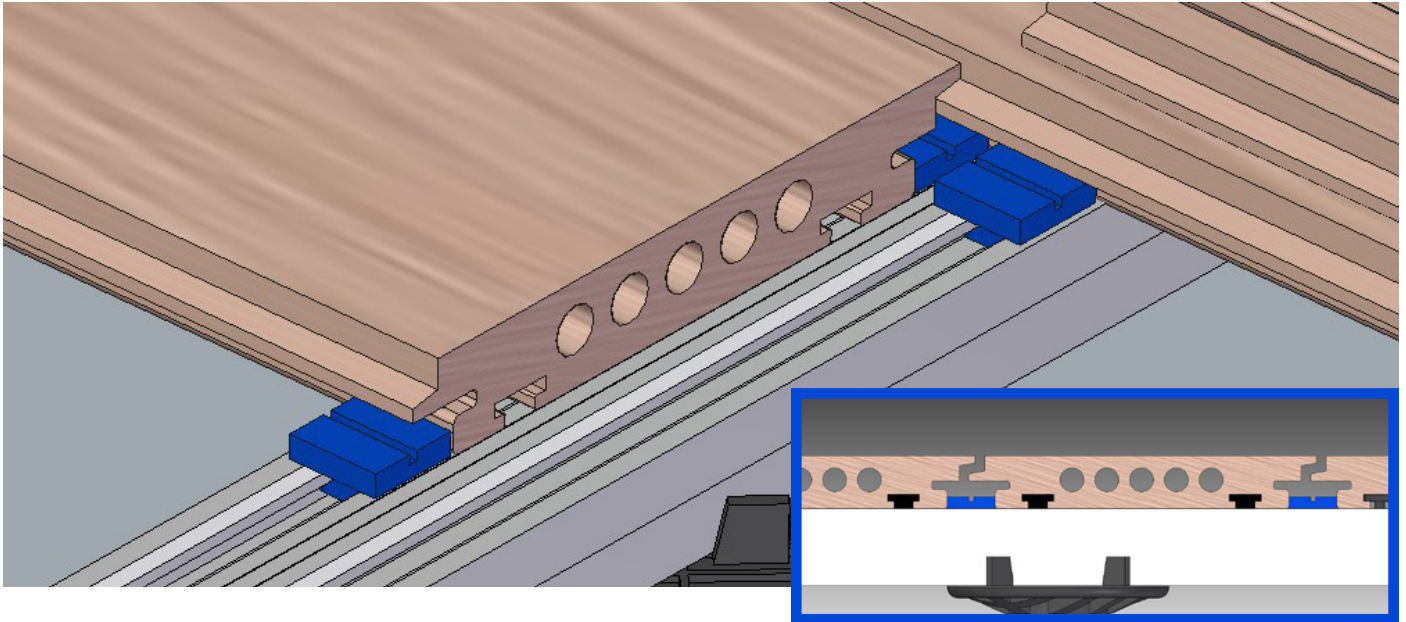
- a) place magnets on each board's short end.
- b) Use always a double joist in the short-end connection.
- c) Ensure a 4mm short end separation with the mark engraved on the double joist.



C) SPACERS



SPACERS should be placed at all short-ends of the board and also in the middle to allow a 4mm gap necessary for water drainage and air circulation.

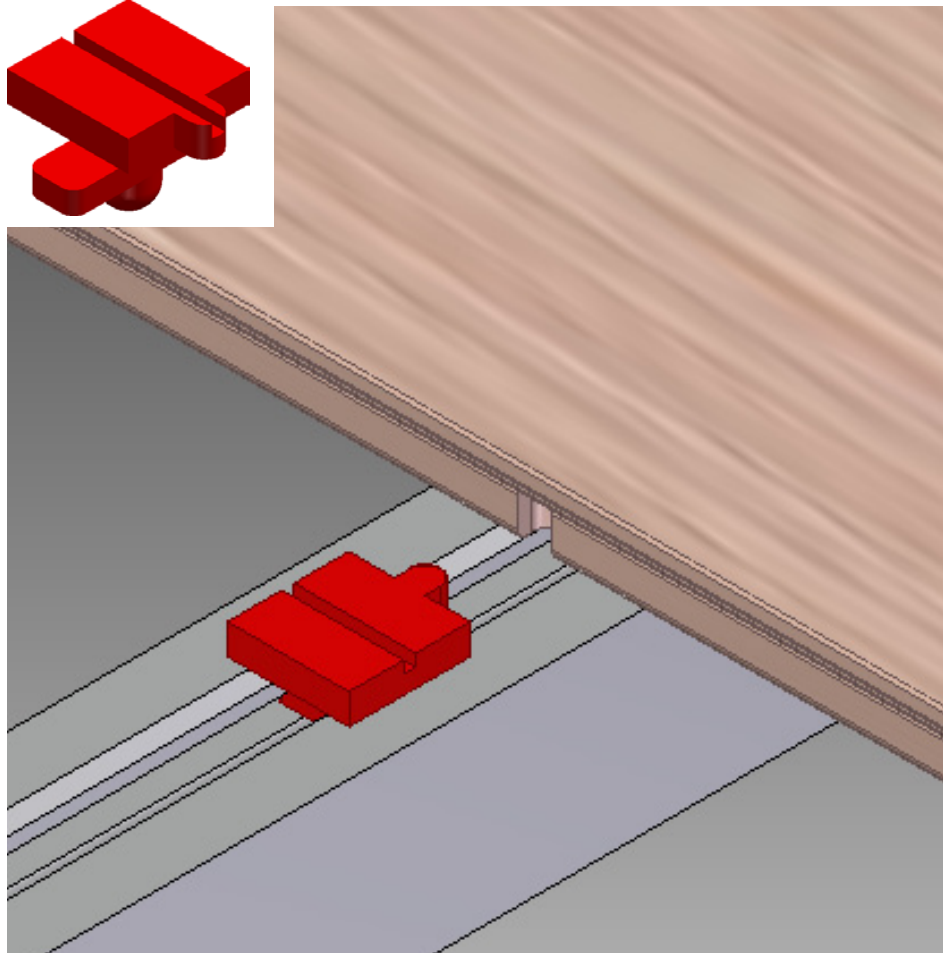
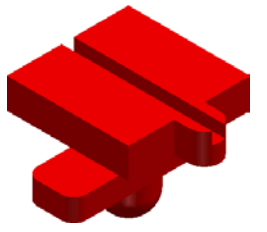


BLOCKING SPACERS

One blocking spacer must be used per each individual board.

LOCATION OF BLOCKING SPACERS

Placed in the middle of every board. A hole must be drilled in the lower part of the board to allocate the plug of the blocking spacer. They provide a 4mm gap between boards and at the same time block the boards to avoid longitudinal moves mainly caused by mechanical tension.



NOTE:

It is not necessary to put spacers at every joist.

This will increase the consumption of accessories and installation time with no extra benefit for the performance of the floor.

D) GENERAL FITTING ILLUSTRATION

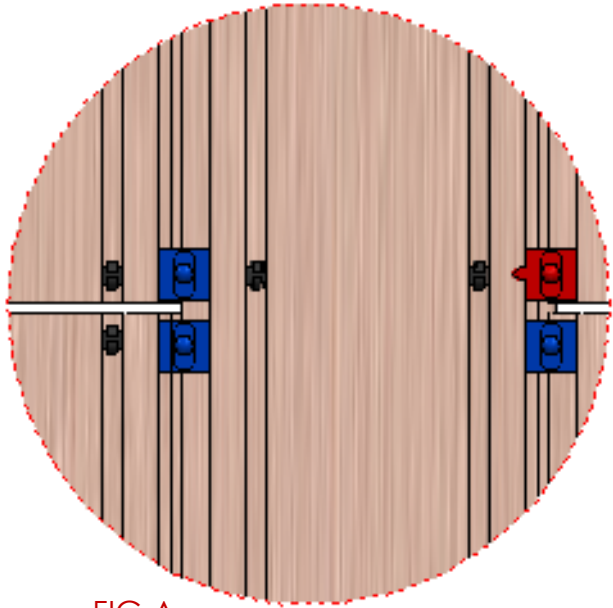
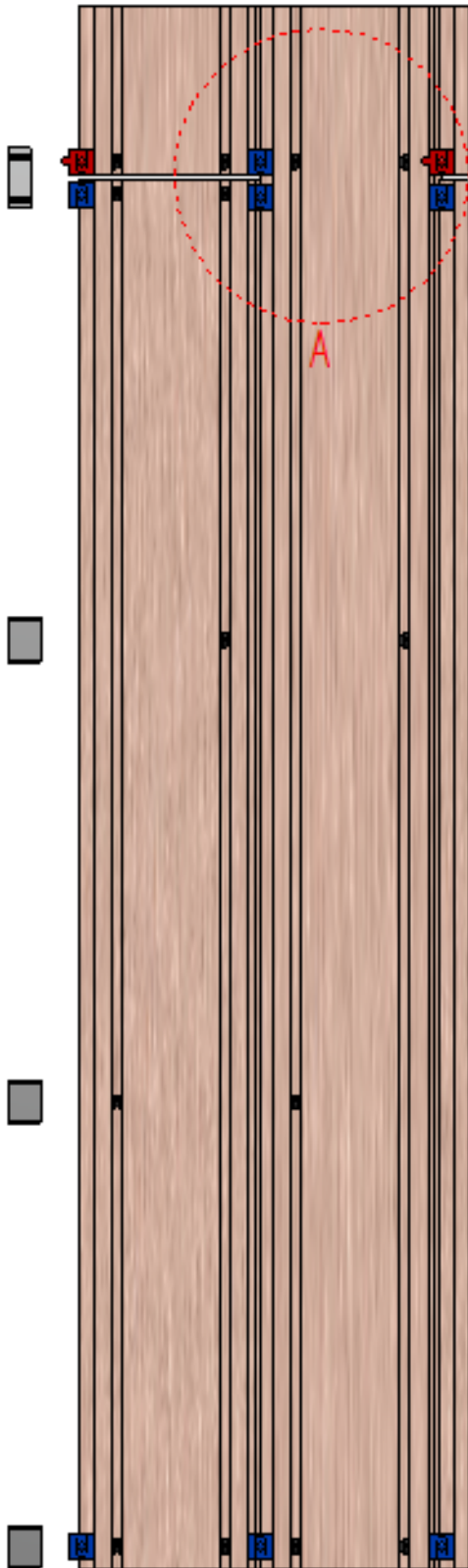


FIG A.



MAGNET CLIPS



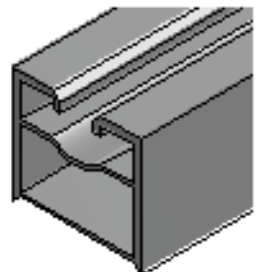
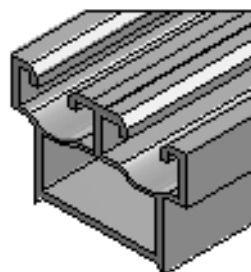
SPACER



**BLOCKING
SPACER**

DOUBLE JOIST

SINGLE JOIST



WPC

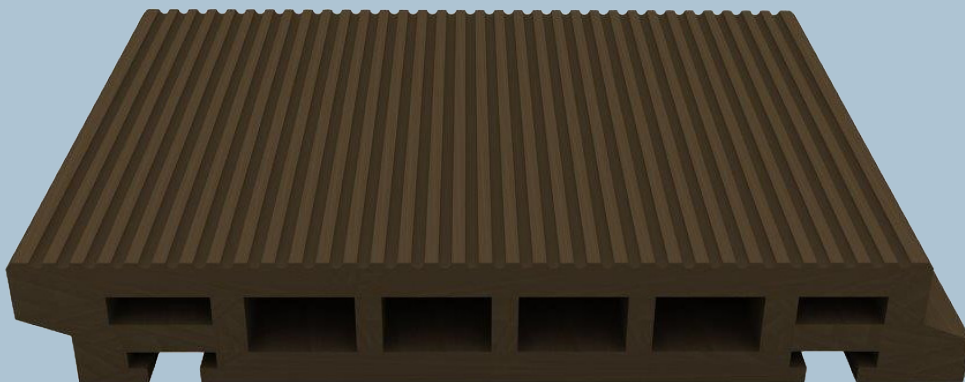
-exterpark

TECH



TECH ROCK

22X145X2200MM



TECH CHOICE

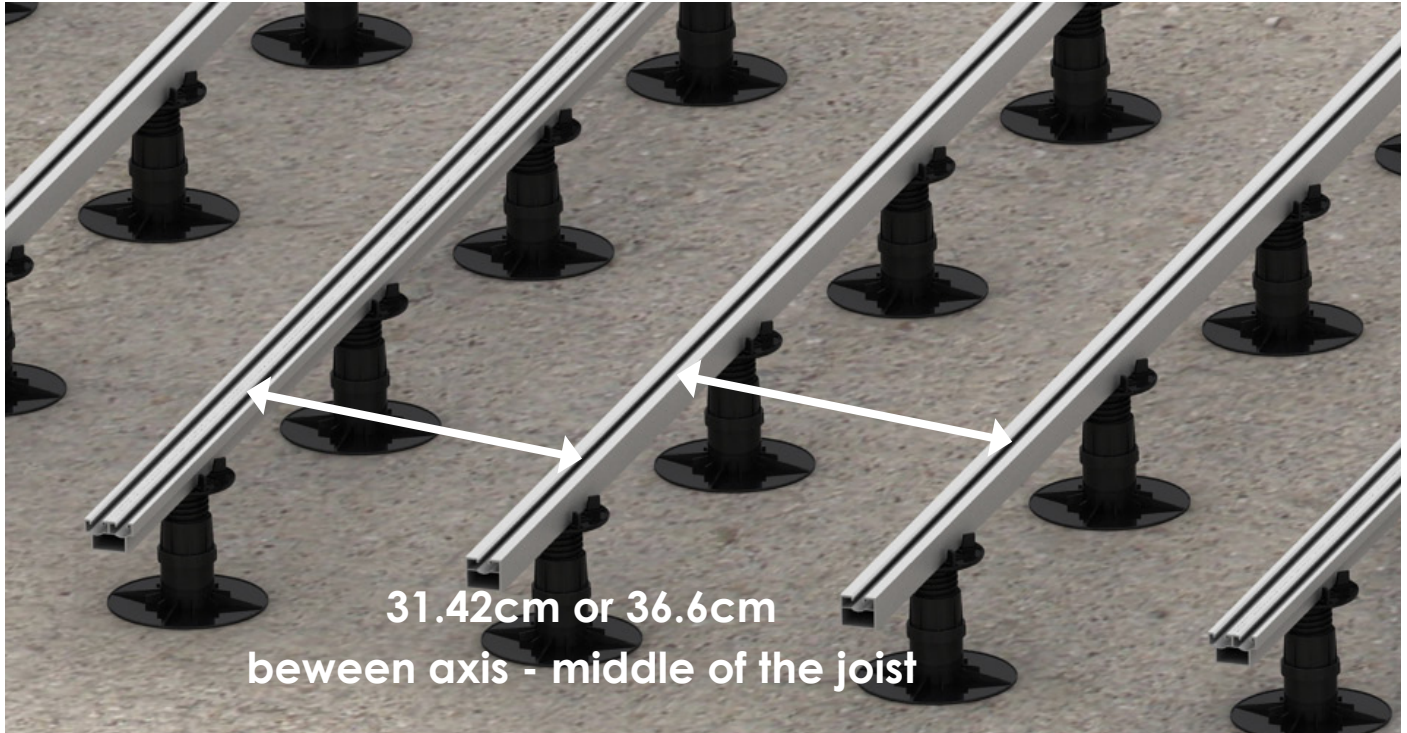
22X145X2200MM

TWO PATENTED INNOVATIONS

Patented invisible profile with no open gaps
Screwless installation patented magnet system with 100% accessible boards

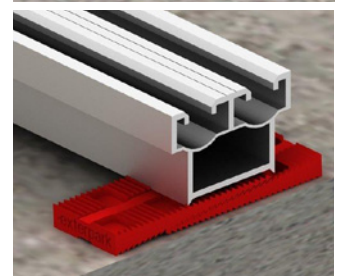
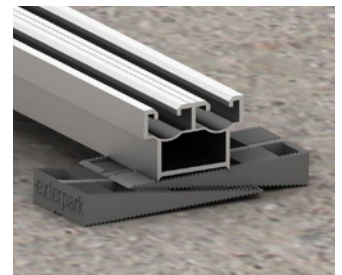
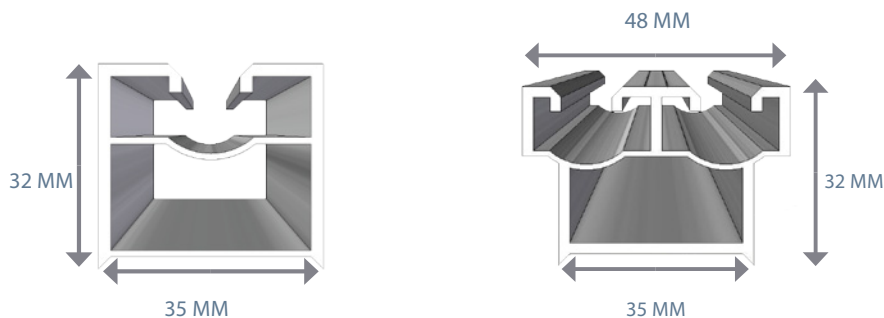
A) JOISTS

Joists are the foundation and structure of the future flooring. They must be expertly leveled and well distributed throughout the site. The leveling should be accurately done with height adjustable pedestals or wedges to match our aluminum joists.



Place joists every 31.42 or 36.6 cm according to pedestrian use

In exterpark tech wpc series, all boards are produced at fixed length of 2200mm. That will allow us to plan ahead where the short end of the boards will fall. therefore the ideal layout of joists will be combinations of 2 rows of single joist and 1 row of double track joist.



ACCESSORIES PER SQM

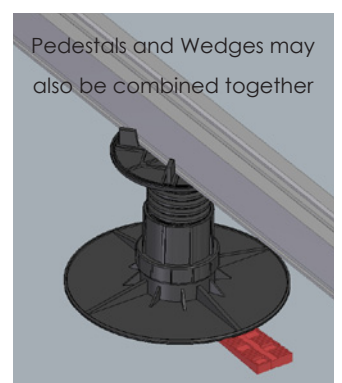
EXTERPARK TECH WPC MAGNET 22X145

DESCRIPTION	MULTIPLE OF 31.4
MAGNET CLIPS (ZIG-ZAG)	36
SPACERS	5
BLOCKING SPACERS	3.5
SIMPLE JOIST	2.5
DOUBLE JOIST	1
PEDESTALS	7

EXTERPARK TECH WPC MAGNET 22X145

DESCRIPTION	MULTIPLE OF 36.6
MAGNET CLIPS (ZIG-ZAG)	34
SPACERS	5
BLOCKING SPACERS	3.5
SIMPLE JOIST	2
DOUBLE JOIST	1
PEDESTALS	6

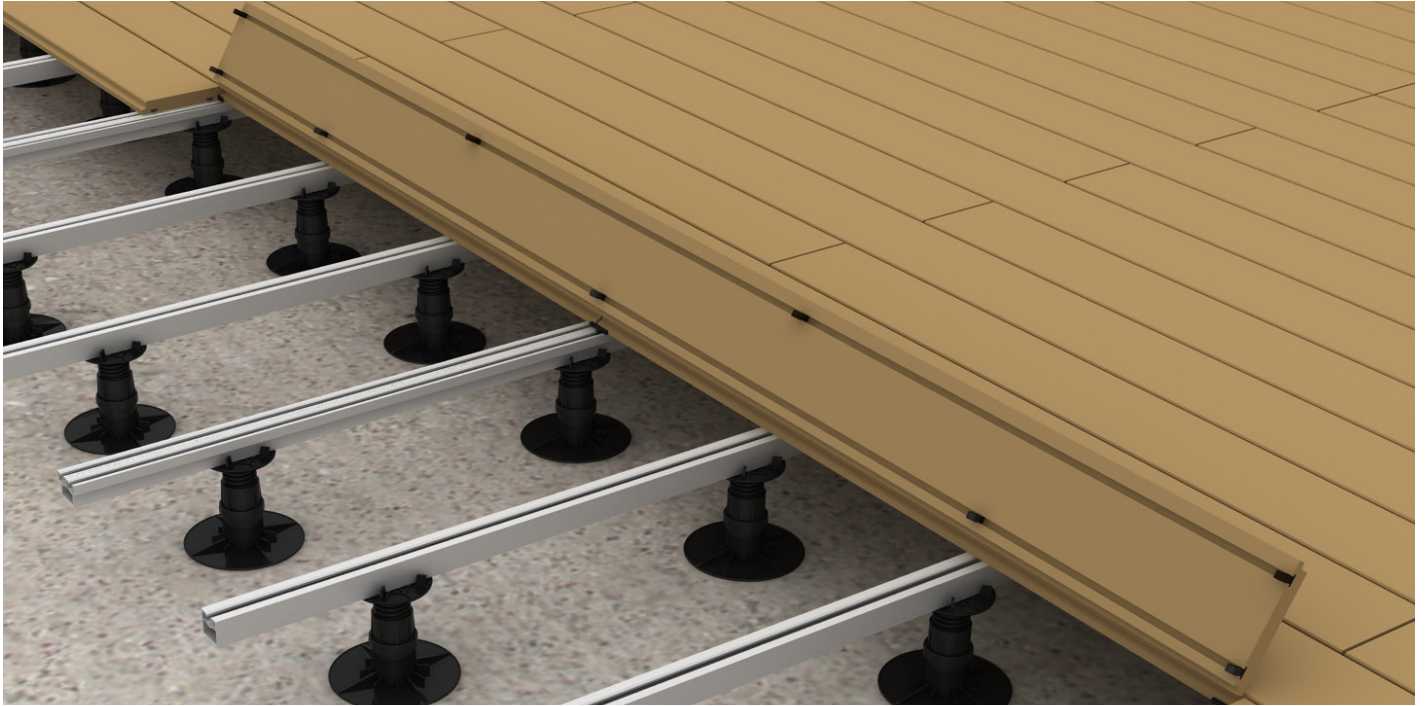
Pedestals and Wedges may also be combined together



B) MAGNET CLIPS

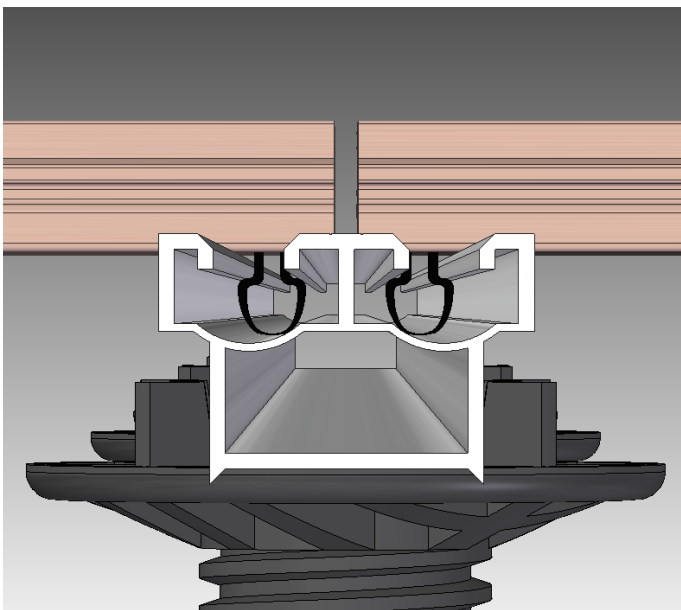
The magnet system is **a mechanical locking with a perfect fitting of magnet clips inside the groove of the joists.**

If clips are not placed in the right position and are smashed against a flat surface, they will break. If on the contrary, clips are properly positioned, they can be clicked in and out as many times as desired.



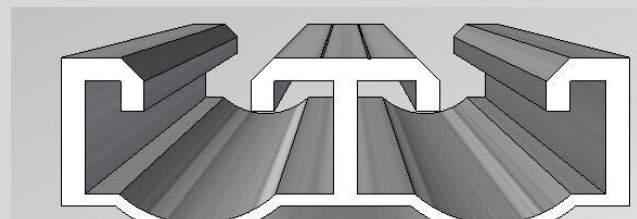
Exterpark TECH can use a zigzag disposition of magnet clips

- a) Turn the board upside down on top of the joists.
- b) Align magnets according to joists spacing.
- c) We recommend two magnet clips at both short ends and in the middle of the board, the rest in zig-zag (in zig-zag) installation.
- d) Twist magnet clips to block them in the required position to fit inside the track of the joist.
- e) Turn board down and press smoothly to click the magnet clips.

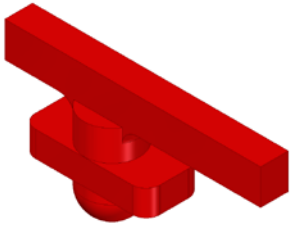


SHORT-ENDS

- a) place magnets on each board's short end.
- b) Use always a double joist in the short-end connection.
- c) Ensure a 4mm short end separation with the mark engraved on the double joist.

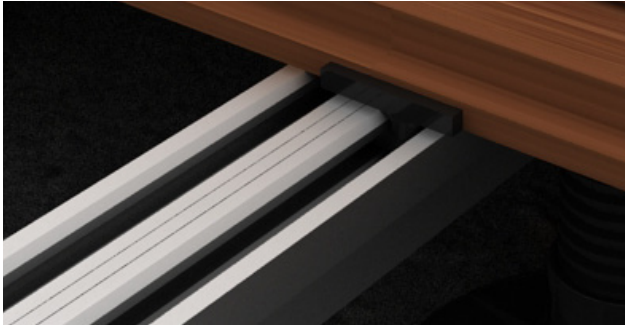


C) SPACERS

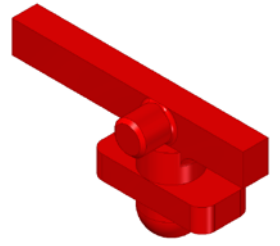


SPACERS their function on outdoor applications is to **provide a 4mm gap between boards** to allow for water drainage and air circulation.

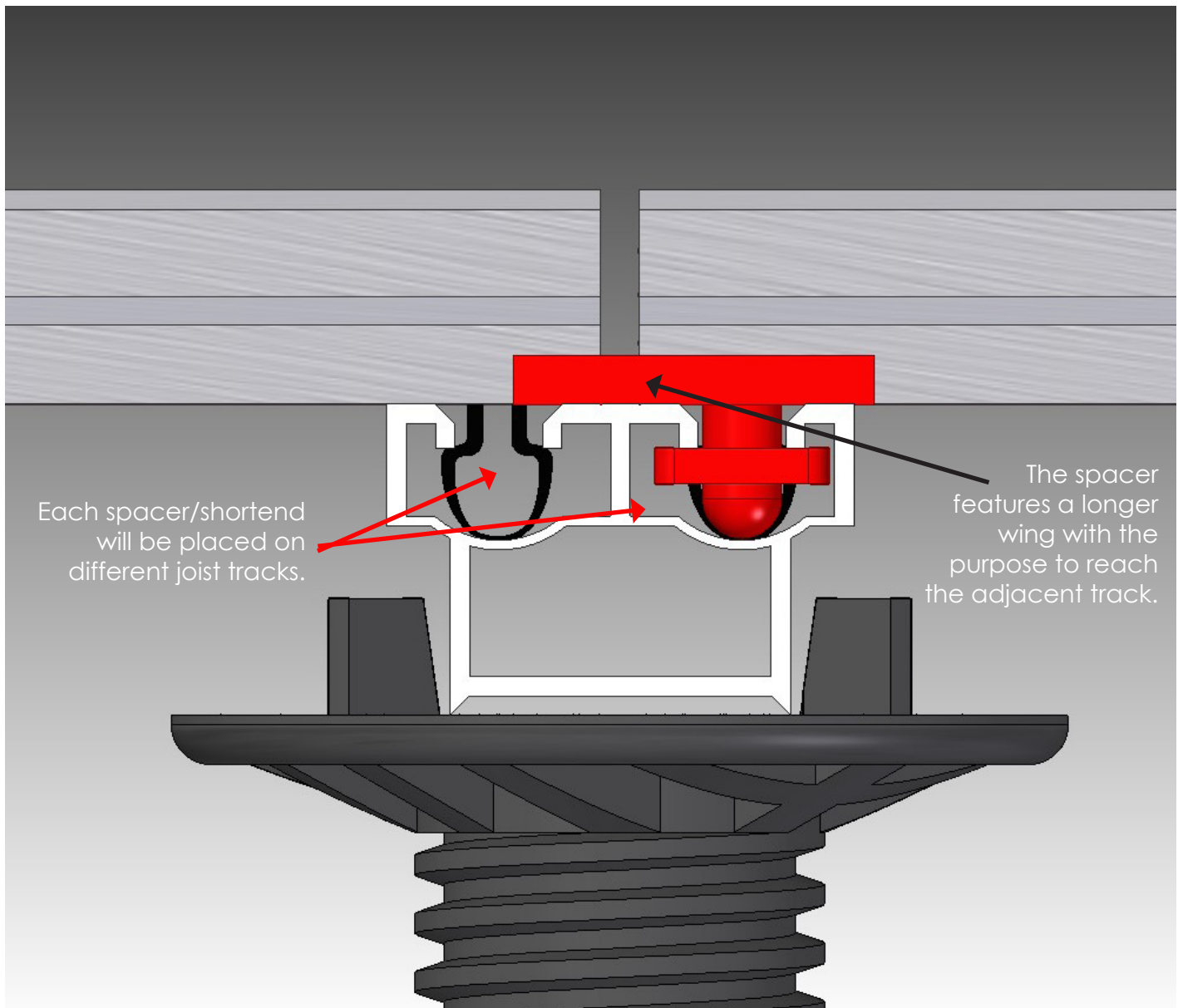
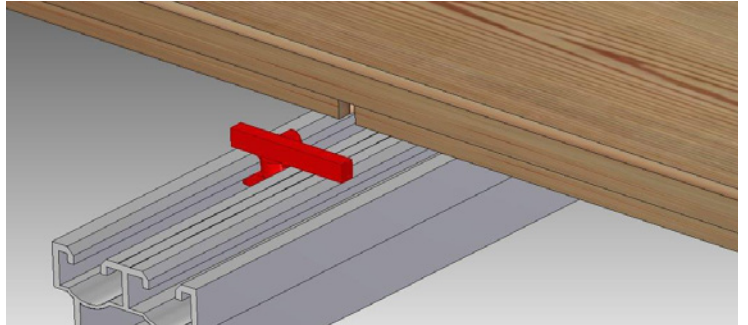
SPACERS SHOULD BE PLACED IN EACH SIDE OF THE BOARD AT SHORTENDS/JOINTS.



BLOCKING SPACERS provide a 4mm gap between boards **and at the same time block the boards** to avoid longitudinal moves mainly caused by mechanical tension.



BLOCKING SPACERS SHOULD BE PLACED IN THE MIDDLE OF EACH BOARD.



D) GENERAL FITTING ILLUSTRATION

